

### **VERSO Planner**

#### **Planning and ordering software.**

- Planning of new VERSO CLIQ locking systems  
incl. accessories (software, programming unit,  
etc.)
- Planning of locking system expansions
- Subsequent ordering of keys and  
locking cylinders

### **CLIQ Manager**

#### **Programming and management software.**

- Management of electromechanical  
VERSO CLIQ locking systems
- Editing of electronic locking system authorisations
- Setting of time zones via electronics





HAUPTGEBÄUDE

**Technische Universität Berlin**



Safe doors.

Safe houses.

Safe apartments.

Safe apartment complexes.

Safe garages.

Safe windows.

Safe letter boxes.

**Be safe.**

Safe offices.

Safe production.

Safe airports.

Safe department stores.

Safe hospitals.

Safe town halls.

Safe power stations.

**Safe valuables.**

Innovation.

Reliability.

Quality.

Know-how.

Flexibility.

Efficiency.

Service.

**Security.**

**IKON**, founded as ZEISS IKON AG in 1926, is one of the leading manufacturers of locking cylinders, locks and locking systems in Germany. Our products and solutions are manufactured to state-of-the-art technological standards and include mechatronical locking cylinders, access control systems, panic exit devices, door fittings and door closers, along with numerous additional locks and securing devices. They protect both people and values.

**effeff**, established in 1936 as a precision engineering and electrical engineering factory, has become the global market leader in the field of electromechanical locking device technology through the implementation of a consistent product policy. Electrical door openers, electrical bolts, safety locks, access control systems, electrical magnets, rescue route technology, revolving door drives, automatic door arrester systems and control elements are among the products that effeff, based in Albstadt, Germany, exports today to 75 countries around the globe.

**The company ASSA ABLOY Sicherheitstechnik GmbH.** The brands IKON and effeff are developed, produced and offered from one company since 2005, perfectly complimenting the two different product ranges produced. This enables us to offer our customers comprehensive and complex solutions for private, commercial and public sectors.

**ASSA ABLOY** is the world's leading manufacturer and supplier of locking system solutions and security systems. Our aim is to meet individual requirements when it comes to safety, security and comfort. With approx. 30.000 employees the group reaches annual sales of circa 3 billion Euro.

ASSA ABLOY  
Sicherheitstechnik GmbH  
Goerzallee 299  
D-14167 Berlin  
Telefon +49 30 81 06-0  
Fax: +49 30 81 06-2600  
[www.assaabloy.de](http://www.assaabloy.de)

  
**IKON**  
WE PROTECT VALUES



**VERSO** CLIQ

Installation, conversion, restructuring?  
The first intelligent security technology.

**ZIKON**  
WE PROTECT VALUES

# VERSO CLIQ™ – intelligent security.

## What is VERSO?

VERSO CLIQ is the latest security technology with built-in IQ. Highly-developed microelectronics with a pioneering data security system have been integrated in a maximum security mechanical locking cylinder system: VERSO from IKON.

VERSO CLIQ provides greater security and flexibility than any other locking system. It is supplied as a plug and play application with no requirement for wiring or connection to a network. Software-controlled system expansion can be easily realised at any time should your requirements increase and you wish to enlarge your VERSO CLIQ locking system.

VERSO CLIQ can be supplied in every familiar locking cylinder version: half-cylinders, double cylinders and knob cylinders. Switch, lever and furniture cylinders and, of course, padlocks are all available! The price/performance ratio can be optimised by combining electronic cylinders with purely mechanical cylinders in a VERSO locking system.



■ The battery is integrated in the key grip.  
(Illustration scale 1:1)

## What can VERSO do?

You have complete control of your keys at all times with a VERSO CLIQ locking system. Each CLIQ key is completely unique and can be personalised for its user. This gives you the flexibility to realise changes if the user wishes so, for example access authorisation. VERSO also ensures security, as you can delete individual authorisation for lost keys at any time.



■ The micro-electronics  
(Illustration scale 1:1)

## Performance characteristics of electromechanical keys.

- Personalised and locking system coding
- Battery integrated in key (lithium cell CR 2025)
- Service life: 20,000 locking actions (approx. 2 years)
- User information on LCD display
- Key and battery are spray water protected
- Available in three versions: E1, E2 and E3  
(E2 with additional memory for up to 100 events and time function, E3 with programmable key, other functions as for E2)



**Performance characteristics of electromechanical locking cylinders (basic version).**

- The electromechanical locking side locks with five mechanical and electromechanical tumblers and a disabling strip
- Personalised and locking system coding
- Integrated memory clip
- Optional: anti-drilling protection AB=2
- Optional: emergency key device
- Optional: 360° free turning

**VERSO E1 locking cylinder – standard memory**

- Authorisation for up to 100 electronic groups possible (each group can contain more than 65,000 individual keys)
- Disabling of up to 100 individual keys possible
- Locking actions and attempts can be recorded (up to 50 events)



- *The B1 key for special cases (up to -30°C, IP67 waterproofing, 5 years battery service life)*



- *The VERSO double cylinder (technical sectional view)*



- *The optimised dust and rain cap protects the locking cylinder outdoors against the effects of wind and weather.*

**VERSO E2 locking cylinder – expanded memory.**

- Authorisation for up to 1,000 electronic groups possible (each group can contain more than 65,000 individual keys)
- Disabling of up to 1,500 individual keys possible
- Locking actions and attempts can be recorded (up to 750 events)

**Performance characteristics of mechanical locking cylinder (VERSO M).**

- The mechanical locking side locks with 12 mechanical tumblers and two disabling strips
- Optional: anti-drilling protection AB=2





- Emergency exits can also be secured easily with VERSO CLIQ. Please enquire about Freeway, the patent for easy opening of emergency and panic exit locks.

### Programming unit.

- Intermediate function for secure data transmission between CLIQ Manager and the programming key
- Reading station for reading out the event memory in the electromechanical user key (E2+E3) + programming E3 keys.
- Information recorded in the software (e.g. time zone, summer/winter time) is loaded into the electromechanical user key via the programming unit
- USB + COM interface



- The programming unit is compact and handy (smaller than A5).

### Programming key.

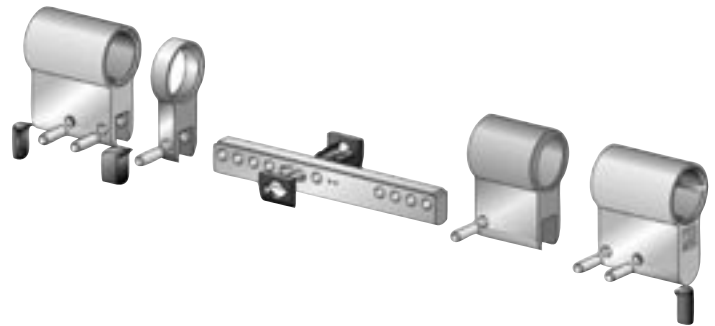
- Transmits up to 750 programming steps to the electromechanical locking cylinders
- Enables reading out of up to 750 events from electromechanical locking cylinders
- Has no locking function
- Lithium battery CR 2025 in the key grip



- The programming key (Illustration scale 1:1)

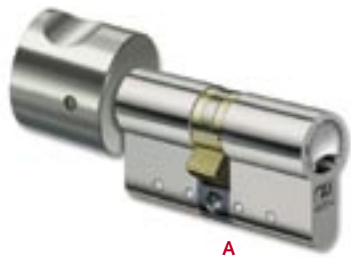
### Flexible modular system.

The length of every VERSO profile cylinder can be adapted to suit the respective door leaf thickness. Combinations of electromechanical and mechanical locking sides are possible in this respect.



You can therefore decide which side of the door is to be secured electromechanically or mechanically. Combine the security options in the manner you require for each specific door. VERSO profile cylinders (electromechanical or mechanical) can be retrospectively altered in length, thanks to the new IKON modular system.





A



B



C



D



E



F

**Comprehensive range of types.**

The broad product range spectrum from IKON gives you the freedom and flexibility you need during planning when selecting the types suitable for your locking system.

We will be delighted to answer any inquiries you may have!

- A Knob cylinder
- B Double cylinder
- C Half-cylinder
- D Padlock
- E Cabinet lock
- F Lever locking cylinder

**The outward appearances also counts.**

IKON enables you to adapt your locking system perfectly to suit all doors. Just select the outfit for each locking cylinder side to suit your personal wishes. A variety of surface colours is available.

	mat nickel plate
	mat brushed
	polished brass
	polished nickel plate
	mat chrome plate
	polished chrome plate
	burnished

*Printed depictions of colours may deviate from the original.*